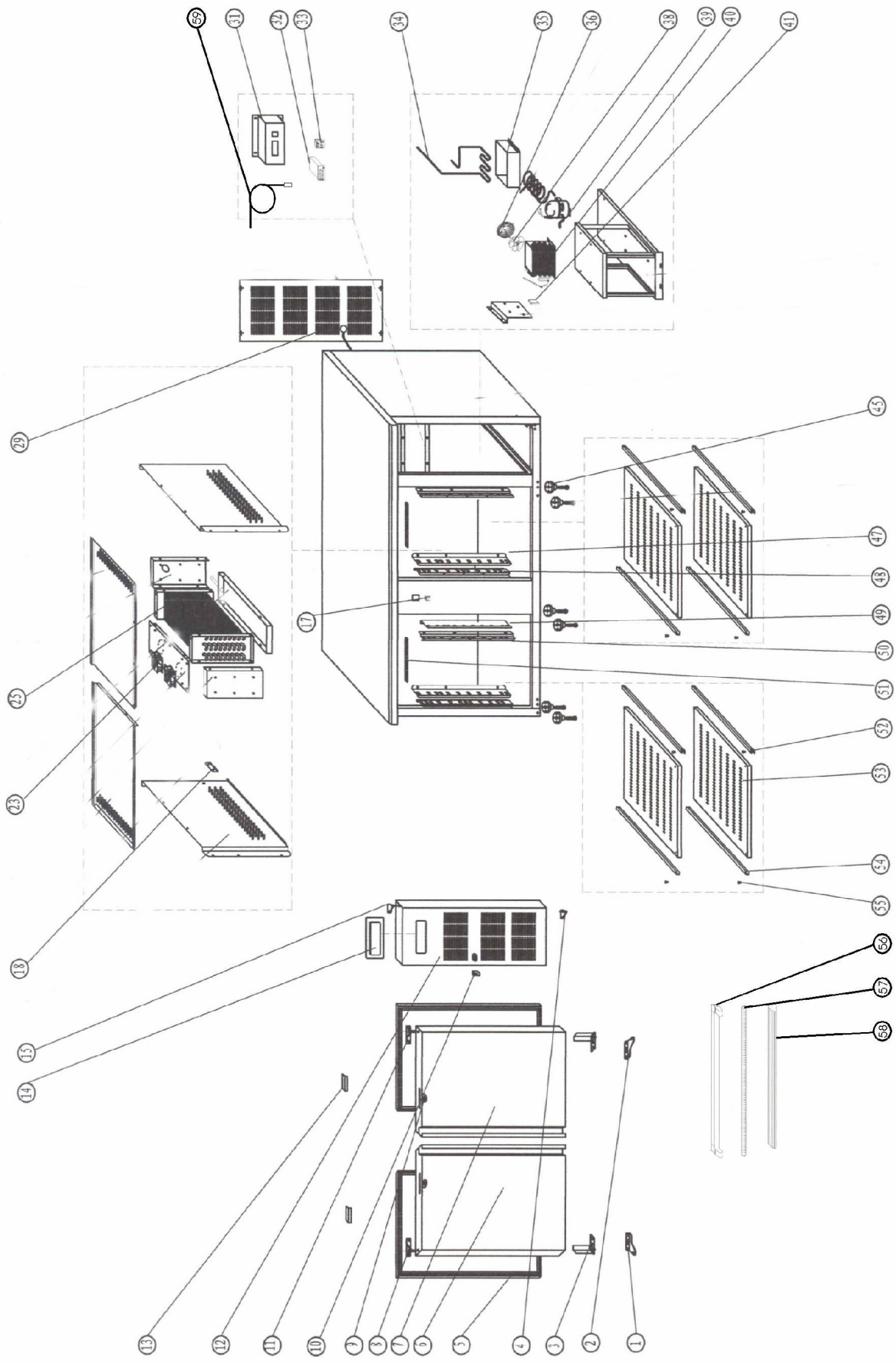


CBC220

| POS. | REF. NO. | ITEM |
|-------------|-----------------|------------------------|
| 1 | 7400090011 | DOWN HINGE LEFT |
| 2 | 7400090012 | DOWN HINGE RIGHT |
| 3 | 7400090013 | SPRING HINGE |
| 4 | 7400090014 | DOWN HINGE FRONT PANEL |
| 5 | 7400090015 | DOOR GASKET |
| 6 | 7400090016 | SOLID DOOR LEFT |
| 7 | 7400090017 | SOLID DOOR RIGHT |
| 8 | 7400090018 | UP HINGE LEFT |
| 9 | 7400090019 | DOOR LOCK |
| 10 | 7400090020 | FRONT PANEL LOCK |
| 11 | 7400090021 | UP HINGE RIGHT |
| 12 | 7400090022 | FRONT PANEL |
| 13 | 7400090023 | LOCK HOOK |
| 14 | 7400090024 | THERMOSTAT COVER |
| 15 | 7400090025 | UP HINGE FRONT PANEL |
| 17 | 7400090027 | LAMP SWITCH |
| 18 | 7200000529 | SENSOR FIXED CLIP |
| 23 | 7200000305 | CONDENSER FAN RAH1238B |
| 25 | 7400090035 | EVAPORATOR |
| 31 | 7400090041 | THERMOSTAT SUPPORT |
| 32 | 7110000398 | THERMOSTAT, XR20C |
| 33 | 7110002401 | MAIN SWITCH |
| 34 | 7400090044 | DISCHARGE PIPE |
| 35 | 7400090045 | WATER BOX |
| 36 | 7400090046 | BASKET GRILL |
| 38 | 7400090048 | CONDENSER FAN |
| 39 | 7400090049 | COMPRESSOR NL8.4MF |
| 40 | 7400090050 | CONDENSER |
| 41 | 7300000012 | JUNCTION BOX |
| 45 | 7400090055 | FEET |
| 47 | 7400090057 | BACK SUPPORT RIGHT |
| 48 | 7400090058 | FRONT SUPPORT RIGHT |
| 49 | 7400090059 | BACK SUPPORT LEFT |
| 50 | 7400090060 | FRONT SUPPORT LEFT |
| 51 | 7400090061 | LED LAMP COMPLETE |
| 52 | 7400090062 | GUIDE RIGHT |
| 53 | 7400090063 | SHELF |
| 54 | 7400090064 | GUIDE LEFT |
| 55 | 7400090065 | PLASTIC LOCK FOR SHELF |
| 56 | 7400090066 | LAMP HOUSE |
| 57 | 7400090067 | LED LAMP |
| 58 | 7400090068 | LAMP COVER |
| 59 | 7110000397 | PROBE XR20/XR60 |



TEFCOLD

100420